

ElinOS 7.1

Industrial Grade Linux



INTRODUCTION

SYSGO's Linux distribution ElinOS has been designed to allow developers to save time and effort by helping them to focus on their application. Industrial grade Linux with a user-friendly IDE goes along with the best selection of software packages to meet customer needs, and with the comfort of world-class technical support. ElinOS has a strong focus on Security and supports isolating applications by separating them in containers.

ElinOS contains tools and kernel support to develop applications for embedded systems based on this architecture. To cope with the large number of embedded platforms and I/O facilities available today, ElinOS uses a fairly recent kernel version with long-term-support. The development languages supported are C and C++.



Free Test Version Download

www.sysgo.com/elinos-download



Free ElinOS Project Download

www.sysgo.com/elinos-projects

TABLE OF CONTENTS

1. Introduction	3
2. Key Users	3
3. Most visible Use Cases	3
4. Key Benefits of PikeOS	4
5. Supported Board Support Packages	4
6. Architecture Support	4
7. Industrial Automation Support	4
8. Supported Filesystems	4
9. IDE: CODEO (also with QEMU)	4
10. Host System Environment for Linux	5
11. Host System Environment for Windows	5
12. Generic Platform BSP including Yocto Linux Kernel Integration	5
13. Core Tools used in ElinOS 7.1	5
14. Product Features of ElinOS 7.1	6
15. Free ElinOS Download	6
16. Partner Ecosystem	6
17. SYSGO Customer Support	6
18. SYSGO Professional Services	6
19. Available Documentation	7
20. Compatibility	7

1. INTRODUCTION

SYSGO’s Linux distribution ElinOS has been designed to allow developers to save time and effort by helping them to focus on their application. Industrial grade Linux with a user-friendly IDE goes along with the best selection of software packages to meet customer needs, and with the comfort of world-class technical support. ElinOS has a strong focus on Security and supports isolating applications by separating them in containers.

ElinOS contains tools and kernel support to develop applications for embedded systems based on this architecture. To cope with the large number of embedded platforms and I/O facilities available today, ElinOS uses a fairly recent kernel version with long-term-support. The development languages supported are C and C++.

2. KEY USERS

ElinOS is an industrial grade Linux distribution running out of the box on SYSGO’s PikeOS hypervisor. The software can be used as foundation for safe and secure systems.

First-Time Embedded Linux Users

- Low entry barrier makes ElinOS especially suited for new users
- Efficient build system with precompiled packages allows fast turn-around times during critical development stages
- Scriptable build and deployment on target allows one-click build-and-test scenarios

Original Equipment Manufacturers

- Custom BSPs tailored for specific hardware product benefit OEMs customers and ease load on support teams
- Super-compact root filesystems help reducing BOM cost and attack surface in security critical applications
- SYSGO helps porting ElinOS to custom hardware and provides assistance during board bring-up
- Integration of Linux Realtime (RT) patches expand ElinOS range of applications into the soft-real time domain

PikeOS Users requiring a Linux Guest Operating System

- When POSIX is not enough to support legacy applications
- Broad range of hardware drivers available
- “Secure-I/O BSPs” allow adding a fully compatible Linux runtime into Safety-critical environments

3. MOST VISIBLE USE CASES

The supported use cases are manifold. An extract is listed below:

- Create an application on a stable and long supported COTS Linux distribution
- Run out-of-the-box as personality on SYSGO hypervisor
- Support for Security targeted developments by Security patch updates
- Need for a customer project dedicated Linux kernel

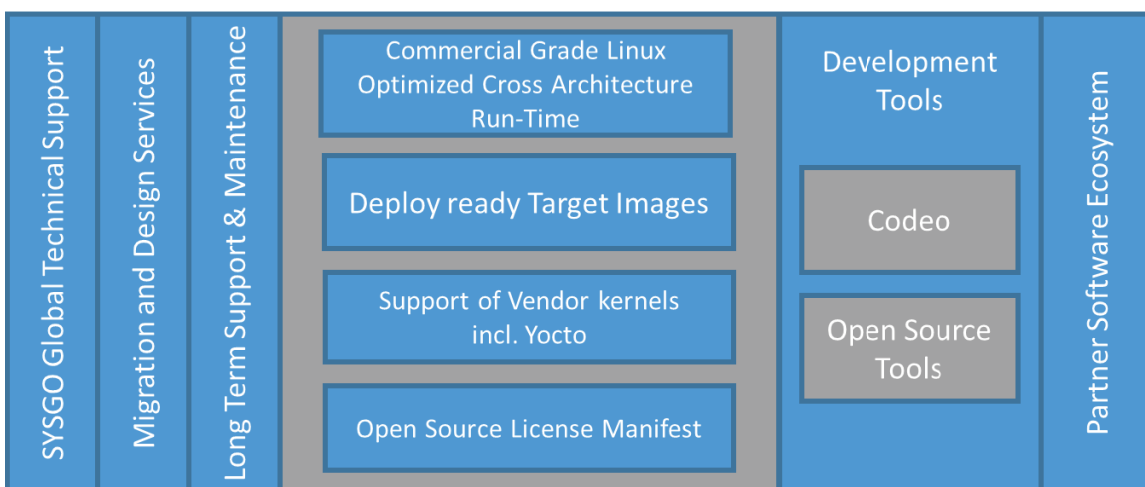


Figure 1: ElinOS Key Components



4. KEY BENEFITS OF ELINOS

- Easy access, low entry barrier with quick Configure – Build – Deploy cycles
- Feature configurator: Enabling you to select the desired features such as network support, graphics, etc.
- Excellent tooling integration: CODEO feature and filesystem editors, LTTng-based tracing, GDB remote debugging, etc.
- Same distribution, toolchain, workflow no matter which board in use
- Built-in real-time Linux support
- For PikeOS as Linux guest operating system
- Supporting PikeOS hardware virtualization
- Quality-controlled, with professional support
- Well-maintained upstream (Debian-stable) for packages
- All platforms under one umbrella

Feature	Customer Benefit
Latest LTS kernel supported	Always up-to-date
New Raspberry Pi4 BSP	RP is widely used in the market as a low cost starter board
License Manifest	List all packages and Open Source licenses used in a project
New generic platform BSP	Allows integration of Yocto Linux kernel
Feature configurator	Enables selection of desired features such as network support, graphics, etc.
Package update automation	Easier and more frequent package updates
ElinOS Security services	Notification about common vulnerabilities affecting ElinOS

5. SUPPORTED BOARD SUPPORT PACKAGES

Qualified BSPs are available for almost every board made by SYSGO’s hardware partners. Support for SMP (Symmetric Multi-Processing) on multi-core platforms like x86, x86-64, PPC e500, PPC e500mc and ARM v7/v8 is included.

BSP Overview: www.sysgo.com/elinos-bsp

6. ARCHITECTURE SUPPORT

The following architectures are supported under ElinOS 7.1:

- x86, x86-64
- PPC e550mc (QorIQ T1040 and above), PPC e5500 (64bit)
- ARM v7hf
- ARM v8 (64bit)

7. INDUSTRIAL AUTOMATION SUPPORT

Optional available drivers are:

- CAN, CANOpen
- VME
- EtherCAT (upon request)
- Others

8. SUPPORTED FILE SYSTEMS

The following filesystems are supported in ElinOS 7.0:

- Ext4, Ext3, Ext2
- Btrfs
- UBIFS
- Flash-friendly file system
- F2FS
- JFFS2 YAFFS2
- SquashFS
- FAT
- NTFS
- NFS
- Initramfs
- Others

9. IDE: CODEO (ALSO WITH QEMU)

The Eclipse-based IDE CODEO supports system architects with graphical configuration tools, provides all the components software engineers need to develop embedded applications and includes comprehensive little helpers to finish embedded projects in a time-saving and cost-efficient way:

- Guided configuration
- Remote debugging (down to the hardware instruction level)
- Target monitoring
- Remote application deployment
- Timing analyses

Of course, CODEO provides standard application development features such as compiler, assembler and linker. ElinOS also provides an IDE and command line environment. And it is possible to switch from IDE to CDK, when for example going to production.

CODEO offers Simulation Targets, a QEMU based hardware simulation. Simulation Targets for all available architectures can be managed and configured through graphical wizards, directly in the IDE. This enables a rapid software development, early testing and debugging even without a real target hardware on the desk. Simulation Targets are available for all hardware architectures supported by ElinOS.

The ROM file editor allows an efficient management of files and system properties. Files can be added and removed directly to the ROM file system. Additionally it offers a dynamic preview of the final layout that updates automatically when changing related configuration that affects the ROM file system indirectly.

Several dedicated graphical editing views are supporting the system Integrator to always keep the overview on important aspects of the ElinOS system configuration with plug-ins for target analysis like system monitoring, tracing or debugging.

Projects can be easily defined with the help of reusable templates and distributed to the development groups. Customers can configure pre-defined components for their project and can also define and add other components during the development process.

By means of the Feature Assembler, the developer is enabled to define the system configuration on a high level. The generation of the root file system and the Linux kernel configuration follow changes of the system configuration automatically, by just considering components that are really required. This mechanism lessens memory footage and results in a significantly reduced number of possible attack vectors compared to a standard Linux kernel.

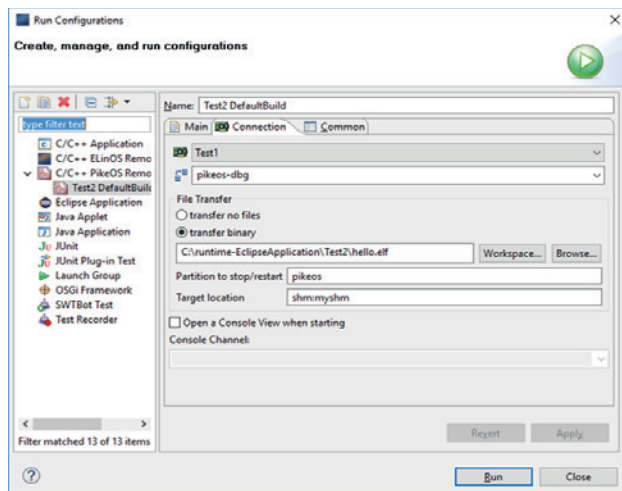


Figure 2: CODEO create and re-deploy Applications

10. HOST SYSTEM ENVIRONMENT FOR LINUX

CODEO supports 64-bit Linux distributions.

11. HOST SYSTEM ENVIRONMENT FOR WINDOWS

CODEO can be used on the following variants of the Windows operating system:

- Windows 10 (64-bit)

12. GENERIC PLATFORM BSP INCLUDING YOCTO LINUX KERNEL INTEGRATION

Via the Generic Platform BSP customers can create systems with ElinOS standard features by configuration of the CDK (Cross Development Kit), defining the boot strategy and kernel source location. In this process CODEO is used as kernel configuration editor. This process also allows the support of all vendor specific kernel, for example from the Yocto project.

This is a quick way for customers to add a new “Native” or “HwVirt” platforms (if supported by the CDK). For the creation of P4Linux BSPs SYSGO professional services is able to support.

13. CORE TOOLS USED IN ELINOS 7.1

ElinOS is an integrated development environment for embedded systems running Linux. ElinOS offers various tools, supports adequate boot strategies, can be easily handled due to graphical interface and is available for the established embedded hardware. This enables seamless working from driver development up to application integration.

Development Tools:

- CODEO – Eclipse-based IDE for embedded systems including plug-ins for target analysis (system monitoring, tracing, debugging)
- Tool chain (incl. cross-compiler, linker, debugger)
- Linux kernel
- Pre-compiled target software and libraries
- Real-time extension (Patch PREEMPT_RT)
- Ready-made project templates, documentation

The following versions are used in ElinOS 7.1:

- QEMU 6.2
- GCC v10.2 and binutils v2.35
- Glibc 2.31
- GDB 10.1
- LTTng 2.12.3
- CODEO 7.2

14. PRODUCT FEATURES OF ELINOS 7.1

- Linux Kernel 5.10 LTS (Long Term Supported), with real-time extensions
- Standard and updated list of BSP with e.g. x86, ARM and QEMU
- ELinOS Security Services
- License Manifest
- Docker support
- BusyBox
- systemd
- QT embedded 5.15.2
- GTK+3.24
- XOrg-Server-1.20
- OpenSSH
- OpenVPN
- Lighttpd
- Apache 2.4
- Network manager 1.30
- Wayland 1.18
- MariaDB 10.5
- Perl 5.32

15. FREE ELINOS DOWNLOAD

SYSGO offers a test environment in which customers can take the chance to test ELinOS in a real online session. This is done by connecting to a fully equipped workstation with a selected target board, using remote desktop technology. Customers can setup embedded Linux projects and create images which run and can be tested on a real target.

Test Version Download: www.sysgo.com/elinos-download

16. PARTNER ECOSYSTEM

SYSGO is committed to establish the technological and business partnerships that will help its customers to achieve their goals. SYSGO is currently working with about 100 partners worldwide.

A list of available partners that help to enhance the value, can be found here: www.sysgo.com/partners

An excerpt of partners per category is mentioned below:

Board Vendors

Curtiss-Wright, Kontron, mercury systems, etc.

Silicon Vendors

Intel, arm, NXP, Renesas, TI, Xilinx, STMicroelectronics, etc.

Software Partners

CoreAVI, AdaCore, ANSYS, CANDERA, Karamba Security, TUXERA, wolfSSL, etc.

Tool Partners

Lauterbach, iSYSTEM, Vector Software, etc.

17. SYSGO CUSTOMER SUPPORT

SYSGO provides support in all phases of the product life cycle. Our products and services are used since more than 25 years in embedded devices. Our online SYSGO Support Network is available for standard and certifiable products.

Standard products come with “standard support” that provide analysis of reproducible errors in and malfunctioning of software developed by SYSGO and provision of known error corrections, as well as support in preparing work-around solutions. Optional “premium support” offers additionally direct access to a dedicated support engineer and limited hours of consulting. Lastly “long term support” offers a retaining ability to rebuild the selected frozen version, a limited number of consulting hours, a dedicated phone number and access to a wide data base of corrections, updates, demo programs and others.

Certified product versions profit from “product cert support” and “long term cert support” that includes Safety and Security bulletins that inform the customer of vulnerabilities or Safety risks.

Customer support is reserved to customers owning a valid support contract. For more information, please contact us!

www.sysgo.com/contact

18. SYSGO PROFESSIONAL SERVICES

SYSGO is certified according to ISO 9001 and ISO 27001. Our engineering processes are assessed according to SPICE Level 3 and our professional services organization support customers in the fields of:

- Training
- Consulting
- Certification Services

Experienced in aerospace, defense or automotive our specialists are available to help with implementing or adapting software architectures and processes. Services include guidance for software installation and orientation, architecture design, assistance with creating Security- or Safety-critical code, BSP and driver migration and creation, software integration, legacy application and infrastructure migration, platform extensions, and process compliance.

For more information, please visit www.sysgo.com

19. AVAILABLE DOCUMENTATION

Detailed documentation is available in SYSGO's customer support area and can be provided under NDA. The documents are included in the product delivery and can be provided to customers for evaluation.

The available documents are:

- Release notes
- Installation manual
- User Manual
- Tutorials
- CODEO documentation
- Demonstrations

20. COMPATIBILITY

- ELinOS 5.x, 6.x projects can be imported into ELinOS 7.1 by cloning them. Usually ELinOS 5.x projects will require some manual rework before they are fully functional within ELinOS 7.1
- ELinOS 7.1 can be installed and used in parallel with all other SYSGO products
- ELinOS 7.1 is compatible with PikeOS 5.1 and PikeOS 5.0
- ELinOS 7.1 is not compatible with PikeOS 4.2 or earlier. PikeOS 4.2 users shall use ELinOS 7.0 or 6.2 instead

All product and service names mentioned are the trademarks of their resp. companies. National product specifications may vary. Data contained in this document serves informational purposes only and are subject to change without notice. SYSGO GmbH shall not be liable for errors or omissions with respect to the materials. Warranties are only set forth in the express warranty statements accompanying SYSGO products and services, if any.